

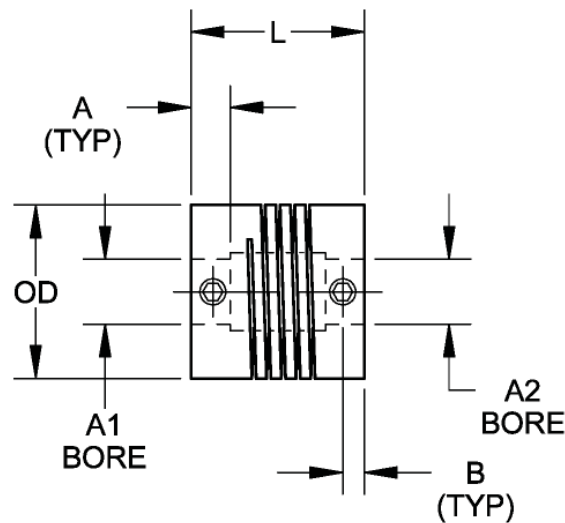
FEATURES

- **Set Screw Couplings**
- **High-Quality Helical Design**
- **Corrosion Resistant Steel (CRES)**
- **Compensates for Shaft Misalignment**
- **No Backlash**
- **High Durability**
- **No Maintenance**
- **Wide Variety of Sizes**



The CPL-HS Series is a high-quality helical design coupling line. These set screw type couplings compensate for motor shaft misalignment, and operate at high speeds, transmitting high torque at constant velocity, as well as compensating for lateral, axial, and angular misalignments. There is no backlash and the CPL-HS Series never requires maintenance. Offered in a variety of outside diameter sizes, major and minor bore diameters, the CPL-HS Series is capable of handling screw torque up to 80 ounce-inches. 50 Piece minimum when ordering.

DIMENSIONS



SPECIFICATIONS

Model #	Bore A1/A2 (in)	Outside Diameter (in)	Torque (in-lb)	Length (in)	Dim A (in)	Dim B (in)	Screw Size	Screw Torque (in-lb)	Torsional Flexibility (deg/in-lb)	Inertia (lb-in-sec <sup>2</sup> )	Weight (g)
CPL-HS050-125-125	0.125	0.5	3.5	0.5	0.13	0.07	4-40	5	1.34	6.9x10 <sup>-07</sup>	3.6
CPL-HS075-250-250	0.25	0.75	8	0.75	0.18	0.1	8-32	20	0.48	5.23x10 <sup>-06</sup>	12
CPL-HS075-5mm-5mm	0.197	0.75	9.1	0.75	0.18	0.1	8-32	20	0.48	5.23x10 <sup>-07</sup>	12
CPL-HS100-250-250	0.25	1	21	1	0.26	0.16	10-24	35	0.2	2.25x10 <sup>-05</sup>	30
CPL-HS100-8mm-8mm	0.313	1	19	1	0.26	0.16	10-24	35	0.28	2.25x10 <sup>-05</sup>	30
CPL-HS112-500-500	0.5	1.125	23	1.12	0.27	0.14	1/4-20	80	0.35	3.86x10 <sup>-05</sup>	39

Note: Minimum 50 pc. order required

L010559